

Pattern

SHETLAND

Wide Scarf with Lace Pattern

Difficulty level:



Needles:



7 - 8

Quality:

Shetland from Gründl
80 % Acrylic, 20% Wool
100 g / 170 m



3 x

Size:

Width: approx. 34cm,
Length: approx. 180cm plus tassels

Usage:

approx. 300g in col. 06 mocha melange.

Lace Pattern Stitch: (patt multiple of 6 plus 9 plus 2 selvedge sts.)

Row 1 (RS): Selvedge st, k1, p2tog, yon, *k3, yrn, p3tog, yon*, rep from * to * ending with k3, yrn, p2tog, k1, selvedge st.

Row 2 and all foll WS rows: Selvedge st, * k3, p3, * rep from * to * ending with k3, selvedge st.

Row 3: Selvedge st, k1, p2, * yon, k3tog (sl 1 k-wise, k2tog, pss0), yrn, p3 * rep from * to * ending with yon, k3tog (sl 1 k-wise, k2tog, pss0), yrn, p2, k1, selvedge st.

These 4 rows form patt.

Selvedge stitches: at beg of row: sl 1 k-wise; at end of row: k 1.

Scarf:

Cast on 39 sts plus 2 selvedge sts (41 sts total) using 7 or 8mm needles and work in lace patt st as given.

Cont in patt until scarf measures 180 cm ending with WS row.

Cast off all sts evenly k-wise.

Finishing:

Do not steam press. Pin out scarf to measurements given, cover with a clean, damp cloth and leave to dry naturally out of sunlight.

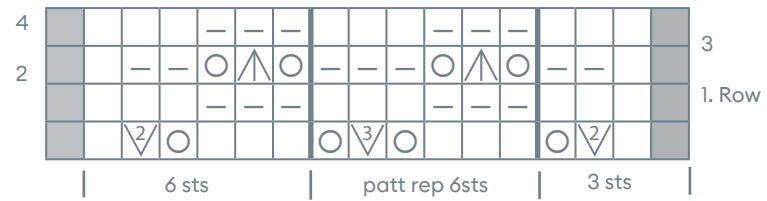
Tassels: Make 26 tassels total (13 for each end). For each tassel cut 4 strands to a length of 50 cm each. Fold each bundle in half and using a crochet hook thread through the cast on (or cast off) edge. Slide the loop off the hook and sl the tassel ends through the loop creating a knot. Pull tight. Attach tassels approx. 1 1/2 - 2 cm apart along edge. Knot 4 strands of each tassel with 4 strands from the next tassel tog as shown. Knot the last 4 strands of the first (as well as the last) tassel tog.

Abbreviations:

approx. = approximate(ly)
beg = begin(ning)
cm = centimetre(s)
col = colour(s)

cont = continue (continuously)
 foll = follow(ing)
 g = gramme(s)
 k = knit
 k-wise = knitwise
 m = metre(s)
 mm = millimetre(s)
 meas = measure(d)
 pssso = pass slipped stitch over previously knit
 stitch
 p = purl
 patt = pattern
 rep = repeat
 RS = right side
 sl = slip
 st(s) = stitch(es)
 tog = together
 WS = wrong side
 yfwd = yarn forward
 yo = yarn over
 yon = yarn over needle
 yrn = yarn 'round needle

Chart:



 = p3tog

 = yo (yfwd, yon or yrn as given in instructions)

 = k3tog (sl 1 k-wise, k2tog, pssso)

 = p1

 = k1

 = p2tog