

## Pattern

# COTTON FUN

## Oven Mitts with Norwegian stars

### Difficulty level:



### Needles:



3,0 – 4,0

### Quality:

Cotton Fun (Gründl)  
100 % cotton  
50 g / 115 m



1x    1x or    1x or    1x

**Size:** approx. 22 cm x 22 cm

**Usage:** for 1 oven mitt: approx.  
50 g Cl. 01 (white) and Cl. 20  
(fuchsia) or any colour

### Pattern:

#### fixed stitches:

each R fS starts with 2 CS as substitutes for the 1st fS and ends with 1 fS in the 2nd substitute CS each Rd. S starts with 2 CS as substitutes for the 1st fS and ends with 1 SS in the 2nd substitute CS

#### Norwegian pattern:

work according to the crochet pattern Crocheting is always done with both colours at the same time. The unused yarn is also crocheted (also with R without colour changes within the R). Prepare all R with both colours until the end.

Colour change: the last S is already unworked with the new colour, here, first place the working yarn over the yarn of the new colours at the front.

#### **Stitch test** (Norwegian pattern):

23 S x 23 R = 10 cm x 10 cm

#### **Instructions:**

Crochet 46 CS (23 CS in fuchsia and 23 CS in white) plus 2 CS (white = substitute for the 1st fS of the 1st R.

Continue crocheting the Norwegian pattern according to the crocheting chart. Prepare 1 x the 1st to 46th R.

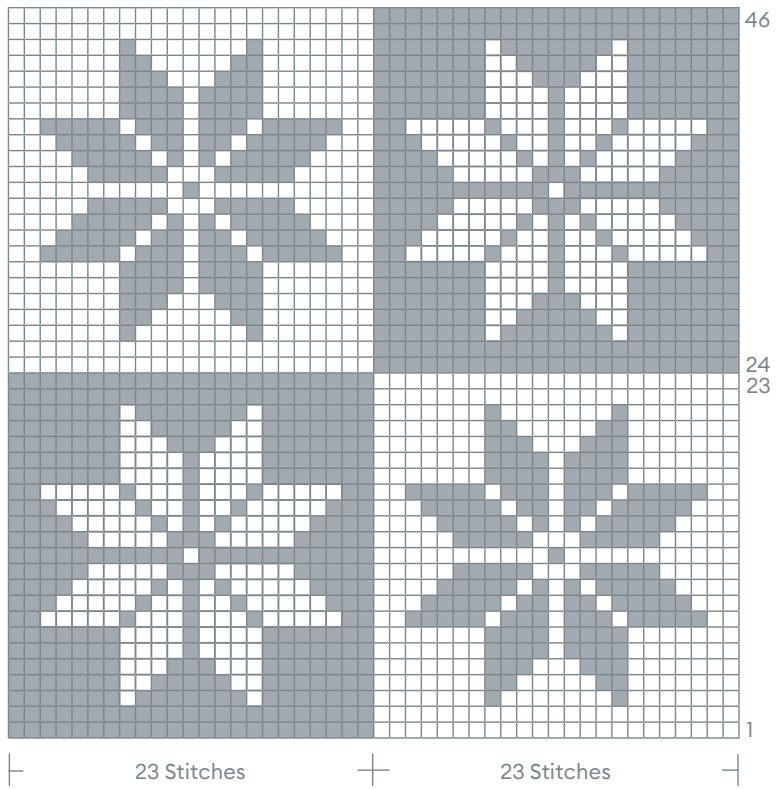
#### Finishing:

Crochet around the oven mitt edges with fS in fuchsia, always crochet 3 fS in each of the 4 corners (1st Rd.: 44 fS per side, 3 fS in each corner). In the 2nd Rd., crochet 20 CS in a corner for the hanger instead of the middle corner stitch. In the following Rd. crochet around these CS with 20 fS.

#### **Abbreviations:**

fS = fixed stitch(es)  
SS = slip stitch(es)  
R = row(s)  
Rd. = round(s)  
CS = chain stitch(es)  
S = stitch(es)  
Cl. = colour(s)

Crocheting chart:



□ = 1 fS in white

■ = 1 fS in fuchsia or any colour