

## Instructions

# COTTON QUICK BATIK

## Triangle Shawl with Lace Pattern

### Difficulty:



### Needles:



3 – 4 mm

### Quality:

Cotton Quick Batik from Gründl  
100 % Cotton (mercerised, gassed)  
100 g / 260 m



3 x

**Size:** approx. 180 cm x 60 cm

**Usage:** approx. 300 g,  
in col. 04 (orange-green-blue-violet)

### Stitch Pattern:

**Garter Stitch:** RS and WS rows: k all sts between selvedge sts.

### Lace Pattern with Garter Stitch Edges:

Work as given in chart. Only RS rows are shown. Work the first 14 rows in garter st, then work the WS as follows: 1 selvedge st, k 2, then work all sts in row as purl sts and purl the yos, then end row with k2, 1 selvedge st.

On the first half of the triangle shawl make incs on the lefthand edge alternating in every row and every 2<sup>nd</sup> row. To do so work according to chart until 2 sts remain, then k1 and k1tbl into next st, 1 selvedge st. Work the last 14 rows in garter st.

**Selvedge:** first st: sl 1 k-wise and last st: k1.

**Tension:** 16 sts and 30 rows to 10 cm meas over lace pattern using size 3 – 4 mm needles or size needed to achieve given tension.

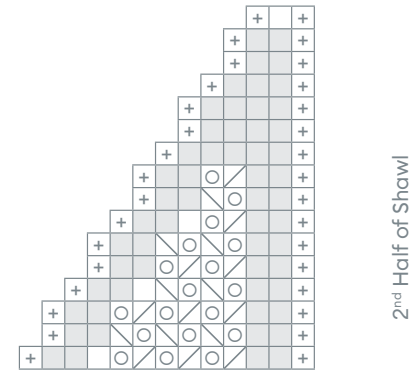
### Instructions: (refer to chart and stitch pattern)

The shawl is worked crosswise. Work approx. 130g (= approx. 1,5 balls of yarn) to the centre of the shawl. Cast on 3 sts (1 st and 2 selvedge sts) and work in garter st. Beg in the 3rd row make incs on the lefthand side in alt every row and every 2<sup>nd</sup> row until 7 sts are on the needle. The lace patt beg in row 15. Cont. incs as established. Work to the centre of the shawl (approx. 90 cm height), ending with row 2 in patt rep. Then work 4 rows of shawl centre. Cont. with the 2<sup>nd</sup> half of the shawl working the decs as given in alt every row and every 2<sup>nd</sup> row until 8 sts remain. Beg with next RS row work in garter st making decs as established until 3 sts remain. Cast off k-wise.

**Abbreviations:**

- alt = alternate(ing)
- approx. = approximate(ly)
- beg = begin(ning)
- col = colour(s)
- dec(s) = decrease(s)
- inc = increase
- k = knit
- k-wise = knit wise
- meas = measure(d)
- patt = pattern
- p = purl
- psso = pass slipped stitch over prev knit st(s)
- rep = repeat
- RS = right side
- skp = sl 1, k1, psso
- st(s) = stitch(es)
- tbl = through back loop
- tog = together
- WS = wrong side
- yo(s) = yarn over (needle)/ yarn round needle

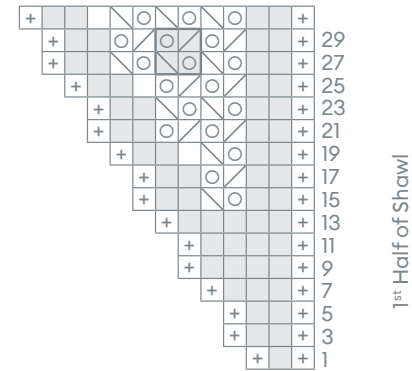
**Chart:**



Cont. Pattern and Decreases Accordingly



Cont. Pattern and Increases Accordingly



- = Selvedge
- = k1
- = 1 yo
- = k2tog
- = skp (= sl 1, k1, psso)
- = 1 garter st
- <sup>3</sup>/<sub>1</sub> = 1 pattern repeat = 2 sts and 4 rows