

Pattern

FUNNY UNI

Crocheted Pillowcases

Difficulty level:



Needles:



5 – 6

Quality:

Funny uni (Gründl)
100 % Polyester
100 g / 120 m

Pillow 1:



5 x

Pillow 2:



5 x

Size: 50 cm x 50 cm

Usage:

Pillow 1: approx. 500 g in col. 07 (grey)
Pillow 2: approx. 500 g in col. 05 (cream)

Stitch Pattern:

Pillow 1 (Lattice pattern with raised sts.):
Work as shown in chart 1. Foundation chain stitches multiple of 2 plus 1 plus 2 turn ch. The numbers on the right side show the RS rows and the numbers on the left side show the WS rows.

Work rows 1–3 once then rep rows 2–3 cont.
Pillow 2 (Basket weave pattern with crossed double treble crochet):

Work as shown in chart 2. Foundation chain stitches multiple of 6 plus 2 plus 2 turn ch. The uneven numbers on the right side show the RS rows and the even numbers on the left side show the WS rows. Work the sts in the back loop on RS rows and in the front loop on WS rows.

Work rows 1–3 once then rep rows 2–3 cont.

Tension:

Pillow 1: 10 sts and 7 R to 10 cm meas over lattice pattern using size 5 mm crochet hook or size needed to achieve given tension.

Pillow 2: 12.5 sts and 4.5 rows to 10 cm meas over basket weave pattern using size 5 mm crochet hook or size needed to achieve given tension.

Instructions:

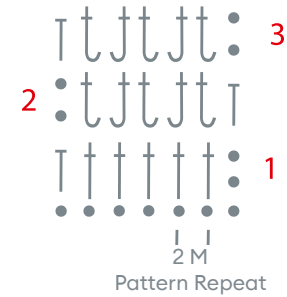
Pillow 1: make a foundation ch of 47 plus 2 tch and work in lattice pattern according to chart 1 for 69 rows (approx. 98 cm). Fold pillow cover in half to meas. 50 cm x 50 cm and close side seams. Insert pillow and close bottom edge. You can alternately sew in a zipper along the bottom edge.

Pillow 2: make a foundation ch of 62 plus 2 tch and work in basket weave pattern according to chart 2 for 44 rows (approx. 98 cm). Fold pillow cover in half to meas. 50 cm x 50 cm and close side seams being careful to close also the holes created in the pattern by placing the sts into the crossed dtr. Insert pillow and close bottom edge. You can alternately sew in a zipper along the bottom edge.

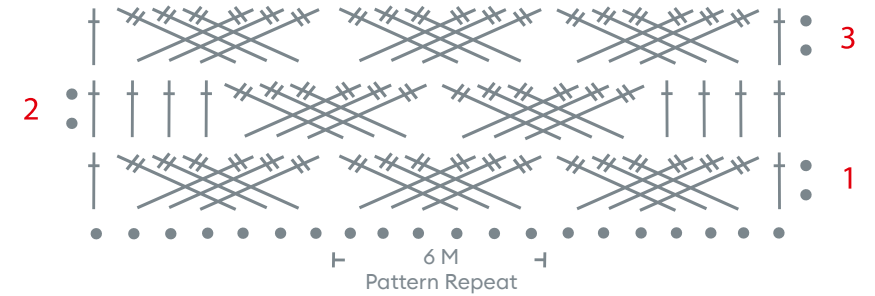
Abbreviations:

- approx. = approximate(ly)
- beg = begin(ning)
- bptc = back post treble crochet
- ch = chain
- ch-sp = chain space
- cm = centimetre(s)
- col = colour(s)
- cont = continue (continuously)
- dtr = double treble crochet
- folll = follow(ing)
- fptc = front post treble crochet
- g = gramme(s)
- htc = half treble crochet
- inc = increase(s)
- m = metre(s)
- mm = millimetre(s)
- meas = measure(d)
- rep = repeat
- st(s) = stitch(es)
- tog = together
- tch = turning chain
- tr = treble crochet

Crochet Chart 1 (Lattice Pattern)



Crochet Chart 2 (Basket Weave Pattern)



- = ch = chain
- ┆ = htc = half treble crochet
- ┆ = tr = treble crochet
- ┆ = dtr = double treble crochet
- ┆ = bptc = back post treble crochet (insert the hook from front to back around the post of the treble crochet of the row below).
- ┆ = fptc = front post treble crochet (insert the hook from back to front around the post of the treble crochet of the row below).