

Pattern

PERLA COLOR

Scarf with Lace Pattern

Difficulty level:



Needles:



8,0 – 9,0

Quality:

Perla color (Fa. Gründl)
100 % Polyester
100 g / 90 m



7 x

Size: Length:

approx. 190 cm (without fringe),
width: approx. 35 cm

Usage:

approx. 700 g, in col. 27 (multi-
coloured grass green - aubergine
- creamy pink)

Stitch Pattern:

Lace Pattern:

refer to stitch chart (amount of sts multiple of 7
plus 2 plus 2 selvedge sts)
Rep rows 1 - 4 cont throughout.

Tension:

13 sts and 20 rows to 10 cm meas over lace pat-
tern using size 8 - 9 mm needles or size needed
to achieve given tension.

Instructions:

Cast on 46 sts and work 1 WS row of purl sts.
Then cont in lace pattern as shown in chart: 1
selvedge st, 1 garter st, 6 x pattern repeat (= 7
sts) and end row with 1 garter st and 1 selvedge
st. Work straight until total of approx 190 cm
ending with a WS row.

Next row: cast off all sts even working all sts
k-wise. Weave in ends.

Finishing:

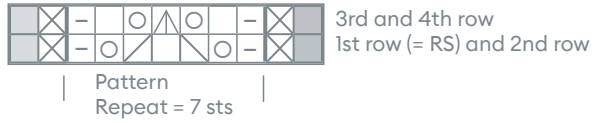
For the fringe: cut 4 pieces of yarn each 50 cm
long for each fringe bundle (approx. 15 bund-
les on each end of the scarf) and knot into the
cast on and cast off edges. Then take 2 threads
from each bundle next to each other and knot
together with approx. 1,5 - 2 cm space between
the first knots.

Abbreviations:

approx. = approxima-
te(ly)
beg = begin(ning)
col = colour(s)
cont = continue (conti-
nuously)
k = knit
k-wise = knit wise
meas = measure(d)
patt = pattern
p = purl
p-wise = purl wise

psso = pass slipped
stitch over prev knit
st(s)
RS = right side
sl = slip
st(s) = stitch(es)
tog = together
WS = wrong side
yo(s) = yarn over
(needle)/ yarn round
needle

Knitting Chart:



■ = selvedge st: first st: sl 1 k-wise, last st: k1

□ = stockinette st: RS: k1, WS: p1

□- = reverse stockinette st: RS p1, WS: k1

⊠ = garter st: RS and WS rows: k1

⊡ = RS: k2tog, WS: p1

⊢ = RS: skp (sl 1, k1, pss0), WS: p1

⊣ = RS: sk2p (sl 1, k2tog, pss0), WS: p1

⊤ = RS: 1 yo, WS: purl the yo