

Pattern

SECOND LIFE

Pillowcase with Leopard Pattern

Difficulty Level:



Needles:



3,5 – 4,5

Quality:

Second Life from Gründl
86 % Polyester (recycled), 14 %
Polyacrylic
100 g / 260 m



1x 1x 1x 1x 1x

Size: Pillowcase to fit a size 45
cm x 45 cm pillow;

Tip: to make a smaller or larger
pillowcase work more or less sts
and/ or rows accordingly

Usage:

each approx. 100 g in col. 13
(petrol), col. 01 (white), col. 15
(black), col. 05 (orange) and col.
04 (amber)

Stitch Pattern:

Stockinette st in rnds:
knit all sts in all rnds.

Zig-Zag pattern:

Work in stockinette st according to chart 1 using
the Norwegian technique, floating the unused
yarn loosely along the back of the work. The
numbers along the right edge of the chart show
the rnds. Repeat the 4 st patt rep a total of 46
times. For the sake of clarity two st repeats are
shown. Work rnds 1 - 8 once.

Leopard Pattern:

Work in stockinette st according to chart 2
using the Norwegian technique. Work the 23 st
patt rep a total of 8 times. Work rnds 1 - 20 once.

Colour Sequence:

10 cm (= 30 rnds.) in col. petrol, 3 cm (= 8 rnds.)
zig-zag pattern, 16 cm (= 48 rnds.) in col. oran-
ge, 7 cm (= 20 rnds.) leopard pattern, 7 cm (= 20
rnds.) in col. amber

Tension:

22 sts and 30 rnds to 10 cm meas

Instructions:

The pillowcase is worked in rnds from the bot-
tom all in one piece. The size of the finished pil-
lowcase is approx. 42,5 cm x 42,5 cm to assure
the pillowcase fits snugly over the pillow insert.
Using col. petrol cast on 184 sts and close the
rnd being careful not to twist the sts. Work in
stockinette st in rnds a total of 43 cm in the
given colour and pattern sequence. Then cast
off all sts even.

Finishing:

Use the mattress st for all seams. To do so, pla-
ce the edges to be joined together flat next to
each other with the right sides facing. Use a bl-
unt needle and alt sts between pieces inserting
the needle under the horizontal bar between
the selvedge st and the 2nd st. Then into the
corresponding bar on the other piece. Cont alt
from side to side and after a few cm of work,

tug the thread firmly to close the seam but be careful not to make the seam too tight. The selvedge sts or the cast off edge sts disappear to the inside and you will have a clean, almost invisible seam.

Sew the pillowcase together along the top edge, place pillow insert into the pillowcase and then close the bottom seam. Alternatively you can also insert a zipper into the bottom seam.

Abbreviations:

alt = alternate(ing)
 approx. = approximate(ly)
 beg = begin(ning)
 col = colour(s)
 cont = continue (continuously)
 dec(s) = decrease(s)
 inc = increase
 k = knit
 k-wise = knit wise
 M1 = make 1
 meas = measure(d)
 patt = pattern
 p = purl
 p-wise = purl wise
 psso = pass slipped stitch over prev knit st(s)
 rep = repeat
 rev = reverse
 rnd(s) = round(s)
 RS = right side
 skp = sl 1, k1, psso
 sl = slip
 st(s) = stitch(es)
 tbl = through back loop
 tog = together
 wyib = with yarn in back of work
 wyif = with yarn in front of work
 WS = wrong side
 yo(s) = yarn over (needle)/ yarn round needle

Chart

Chart 1:

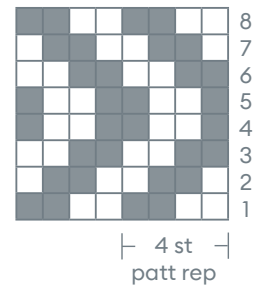
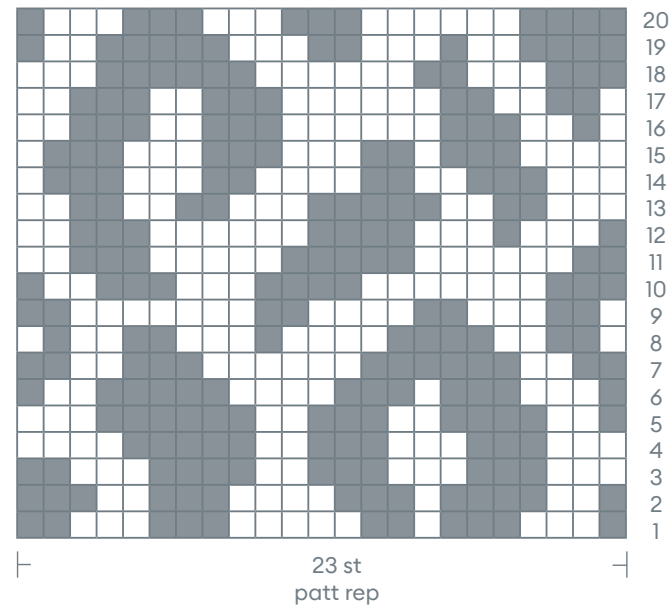


Chart 2:



■ = k1 in black
 □ = k1 in white