

Pattern

SECOND LIFE

Pillowcase with Zebra Pattern



Difficulty level:



Needles:



3,5 - 4,5

Quality:

Second Life from Gründl
86 % Polyester (recycled), 14 %
Polyacrylic
100 g / 260 m



1 x 1 x 1 x 1 x

Size:

Pillowcase to fit a size 45 cm x 45 cm pillow;

Tip: to make a smaller or larger pillowcase work more or less sts and/ or rows accordingly.

Usage:

each approx. 100 g in col. 13 (petrol), col. 01 (white), col. 15 (black) and col. 02 (rosé)

Stitch Pattern:

Stockinette st in rnds:
knit all sts in all rnds.

Chart 1 (= zebra pattern) and chart 2:

Work in stockinette st according to charts using the Norwegian technique, floating the unused yarn loosely along the back of the work. The numbers along the right edge of the chart show the rnds. Repeat the 46 st patt rep a total of 4 times for chart 1. Work rnds 1 - 46 once. Repeat the 4 st patt rep for chart 2 cont. throughout. Work rnds 1 - 6 in chart 2 once in height.

Colour Sequence:

12 cm (= 36 rnds) in col. rosé, 15,5 cm (= 46 rnds.) according to chart 1 (= zebra pattern), 3 cm (= 9 rnds.) in col. petrol, 2 cm (= 6 rnds.) as in chart 2 and then 10,5 cm (= 32 rnds.) in col. petrol

Tension:

22 sts and 30 rnds to 10 cm meas over stockinette st using size 3,5 - 4,5 mm

Instructions:

The pillowcase is worked in rnds from the bottom all in one piece. The size of the finished pillowcase is approx. 42,5 cm x 42,5 cm to assure the pillowcase fits snugly over the pillow insert. Using col. rosé cast on 184 sts and close the rnd being careful not to twist the sts. Work in stockinette st in rnds a total of 43 cm in the given colour and pattern sequence. Then cast off all sts even or cast off the sts together with the sts directly across with wrong sides facing (cast off seam).

Finishing:

Use the mattress st for all seams. To do so, place the edges to be joined together flat next to each other with the right sides facing. Use a blunt needle and alt sts between pieces inserting the needle under the horizontal bar between the selvedge st and the 2nd st. Then into the corresponding bar on the other piece. Cont alt from side to side and after a few cm of work, tug the thread firmly to close the seam but be

careful not to make the seam too tight. The selvedge sts or the cast off edge sts disappear to the inside and you will have a clean, almost invisible seam.

Sew the pillowcase together along the top edge, place pillow insert into the pillowcase and then close the bottom seam. Alternatively you can also insert a zipper into the bottom seam.

Abbreviations:

- alt = alternate(ing)
- approx. = approximate(ly)
- beg = begin(ning)
- col = colour(s)
- cont = continue (continuously)
- k = knit
- meas = measure(d)
- patt = pattern
- p = purl
- rep = repeat
- rnd(s) = round(s)

Chart:

Chart 1:

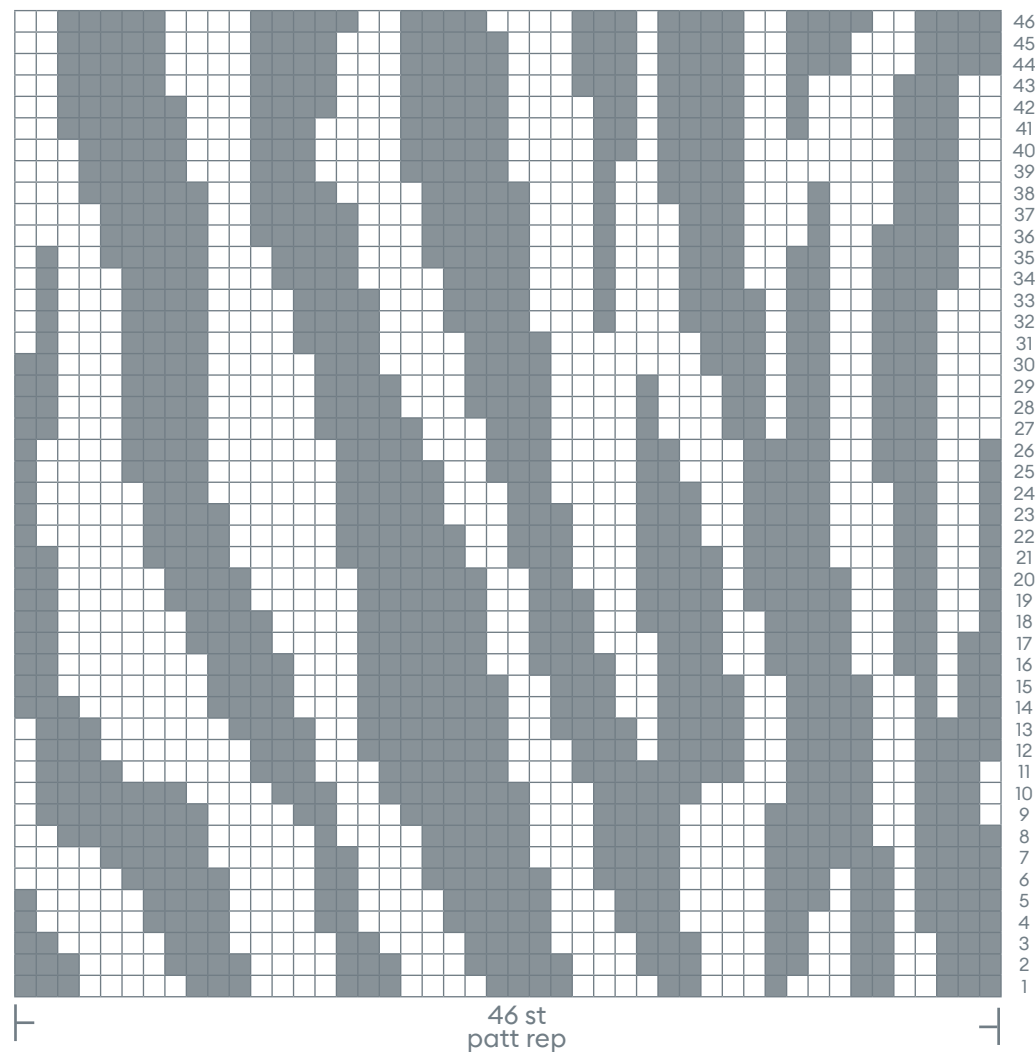
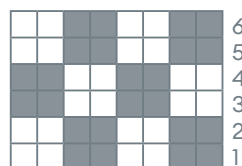


Chart 2:



4 st
patt rep

- = k1 in black
- = k1 in white