

Pattern

PACIFIC LACE

Triangular Shawl with Lace Pattern

Difficulty level:



Needles:



4,0 – 4,5

Quality:

Pacific Lace from Gründl
80 % Polyacrylic,
10 % Wool, 10 % Alpaca
100 g / 550 m



2 x

Size:

Height (from bottom point to the top edge): approx. 90 cm, Width (meas. along top edge): approx. 170 cm

Usage:

approx. 200 g col. 01 (ocean print)

Pattern:

Lace Pattern:

Work according to chart. Only RS rows are shown. P all sts and yo's in the WS rows unless otherwise noted.

Work rows 1-32 then rep. rows 25 - 32 cont. Patt rep. is marked in grey.

Garter st: k all sts in RS and WS rows.

Selvedge stitches: at beg of row: sl 1 k-wise; at end of row k 1.

kf&b: k into front of the next st on left needle, but do not sl the st off the needle. Then take right needle to back and k through the back of the same st. Then sl the st off the left needle.

Tension: 19 sts and 36 rows to 10 cm meas over lace patt using size 4mm needles or size needed to achieve required tension.

Instructions:

Cast on 3 sts (1 st plus 2 selvedge sts) and begin with the 1st row in chart and work until shawl meas. 88 cm in height ending with a WS row after a row with yo's. Then work 6 rows in garter st cont. the increases before and after the selvedge sts in every RS row as established. Cast off all sts **loosely** k-wise.

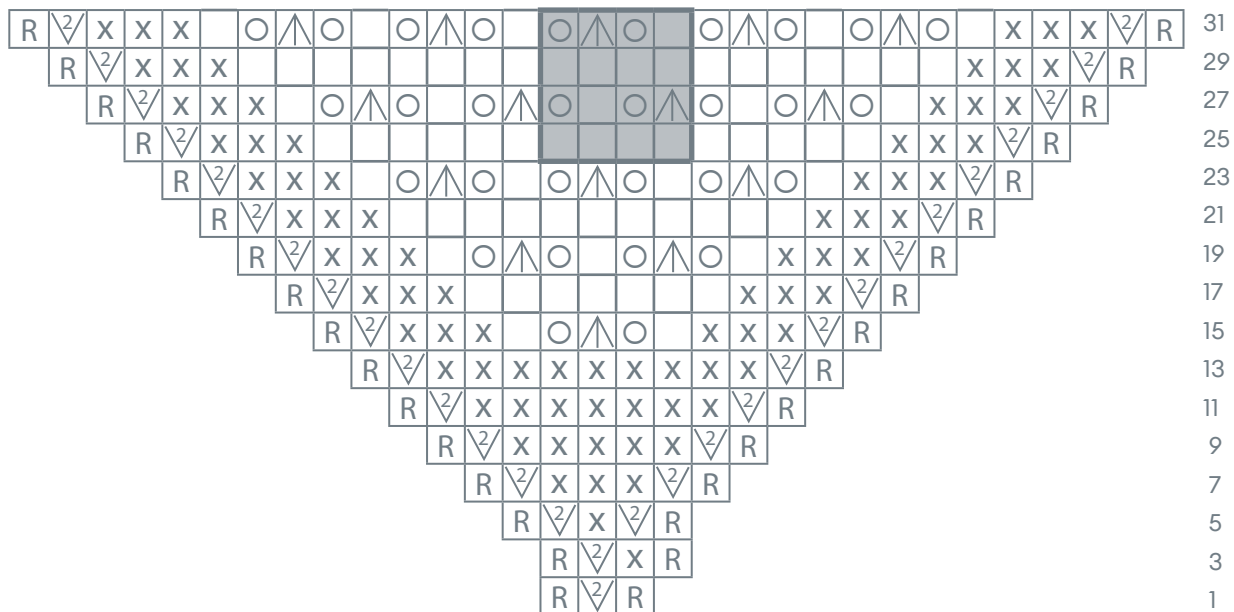
Making up:

Pin out shawl to measurements given, cover with a clean damp cloth and leave to dry out of direct sunlight.

Abbreviations:

- beg = begin(ning)
- col = colour(s)
- cont = continue (continuously)
- k = knit
- kf&b = knit into front and back
- M1 = increase one st as described
- meas = measure(d)
- p = purl
- patt = pattern
- pssso= pass slipped stitch over previous stitch
- rep = repeat
- RS = right side
- sl = slip •st(s) = stitch(es)
- tog = together
- WS = wrong side
- wyib = with yarn in back
- yo('s) = yarn over(s)

Chart:



- = k 1
- = 1 yo
- ^ = sl 1, k 2 tog, pssso
- / = M1 kf&b
- X = 1 garter st (k all rows RS and WS)
- R = 1 selvedge st