

Pattern

PACIFIC LACE

Shawl with Lace Pattern

Difficulty level:



Needles:



3,5 - 4,0

Quality:

Pacific Lace from Gründl
80 % Acrylic,
10 % Alpaca,
10 % Wool
100 g / 550 m



2 x

Size:

Width: approx. 41 cm,
Length: approx. 200 cm

Usage:

approx. 200 g col. 03 (hibiscus)

Pattern:

Lace patt: (multiple of 12 sts + 1 st + 2 selvedge sts)

Work as shown in chart: Rep rows 1 - 10 cont. Only RS rows are shown. In WS rows p all sts and yos. Begin with the st before patt rep, work patt rep cont., end with sts after rep.

Garter stitch:

RS and WS rows: k all sts.

Slip stitch selvedge edge:

Beg of row: sl st k-wise wyib.

End of row: k 1.

Tension: (meas over lace patt, after blocking)

24 sts x 37 rows = 10 cm x 10 cm

Instructions:

Cast on 99 sts + 2 selvedge sts (101 sts total) and work first row as a WS row.

Next row (1st row in chart): sl st selvedge edge, k 1 (garter st), 97 sts in lace patt, k 1 (garter st), 1 sl st selvedge edge.

Cont until work meas 200 cm ending with a WS row.

Next row: k all sts. Then cast off all sts k-wise.

Making up:

Pin out shawl to measurements given, cover with a clean damp cloth and leave to dry out of direct sunlight.

Abbreviations:

beg = begin(ning)

cm = centimetre(s)

col = colour(s)

cont = continue

(continuously)

fol = follow(ing)

g = gramme(s)

k = knit

m = metre(s)

mm = millimetre(s)

meas = measure(d)

p = purl

p-wise = purl wise

patt = pattern

pssso= pass slipped stitch over previous stitch

rep = repeat

RS = right side

sl = slip •st(s) = stitch(es)

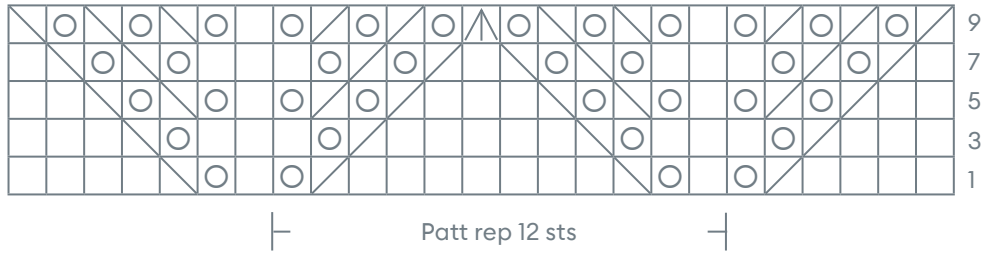
tog = together

WS = wrong side

wyib = with yarn in back

yo(s) = yarn over(s)

Chart:



-  = k 1
-  = k 2 tog
-  = sl 1, k 1, psso
-  = sl 1, k 2 tog, psso
-  = 1 yo